



NEMeter



NEW ERA SMART ELECTRIC METERS



Company History 3

Types of Meters 4

Communications..... 5

Viewing Data..... 8

Surface Mount Specifications and Details..... 10

Mini-Meter Specifications and Details..... 12

Socket Meter Specifications and Details..... 14

Multi-Meter Panels Specifications and Details..... 16

Current Transformers 18

At Global Power Products, we manufacture utility-grade, revenue-class submeters, surge suppressors, and current transformers for commercial, industrial, and residential markets.

We also manufacture the GenerLink and the EZ-Connect. These transfer switches provide a safe and easy way to connect a portable generator to your home during a power outage.

Established in 1995, we are continually growing and developing to deliver accurate, user-friendly, and affordable products to meet consumer needs.



Manufactured in Georgia, USA with the focus being on great customer service.



The New Era Meter addresses the complex metering and communication requirements necessary to proactively adjust an individual's or department's energy consumption habits.



Global Power Products has sold 10,000+ meters since its inception.



We have 1000+ users using our online cloud platform.



For order quantities below 100, we ship within 2-3 weeks. Any order quantity above 100 with communications, we ship within 4-6 weeks.



SURFACE MOUNT

Perfect for residential or commercial jobs.

NEMA 4X enclosure that works both indoors and outdoors.

Dimensions: 8" x 8.75" x 3.3"



MINI

Perfect for single phase applications when place is limited.

Small enclosure works perfect for indoor use.

Dimensions: 6.5" x 5" x 2"



SOCKET

Multiple meter forms available including 2S, 12S, and more.

NEMA 4X enclosure works both indoors and outdoors.

Dimensions: 4.9" x 6.95"



MULTI-METER PANEL (6)

Perfect for meter cabinets with limited space where up to 6 meters will be installed. NEMA 4X enclosure works both indoors and outdoors.

Dimensions: 13.45" x 11.83" X 6.31"



MULTI-METER PANEL (12)

Perfect for meter cabinets with limited space where up to 12 meters will be installed. NEMA 4X enclosure works both indoors and outdoors.

Dimensions: 17.58" x 15.96" X 8.34"

COMMUNICATIONS	
WIRELESS	WIRED
LTE Cat M1 Cellular	Ethernet
900 MHz Radio Frequency	BACnet/Modbus

LTE-CAT M1

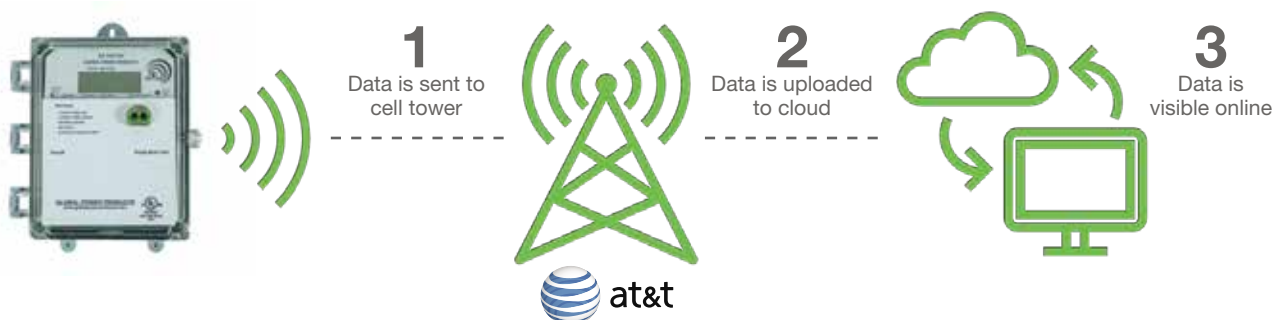
This cellular option utilizes AT&T technology to ensure an extremely reliable connection from anywhere in the US. Our Cat-M1 module has excellent coverage and great building penetration making it perfect for hard-to-reach areas like basements, rooftops, cement structures, and areas where there is no on-site network.

Our cellular communication option makes collecting meter data easier than ever before! Connected by AT&T, this cellular option utilizes the latest in LTE Cat-M1 technology and requires ZERO setup by the customer. Cat-M1 is a low-power wide-area (LPWA) technology that offers a highly secure, cost-effective, and extremely reliable way to upload meter data. This is the first network to operate on a dedicated spectrum optimized for IoT which allows it to thrive in even the most challenging environments.

LTE-CAT M1 CELLULAR

LTE Cat M1 is a cellular technology specifically designed for Internet of Things (IoT) communications. The NE meter uses this technology to wirelessly connect to a nearby cellular tower and automatically starts uploading its data to the cloud database.

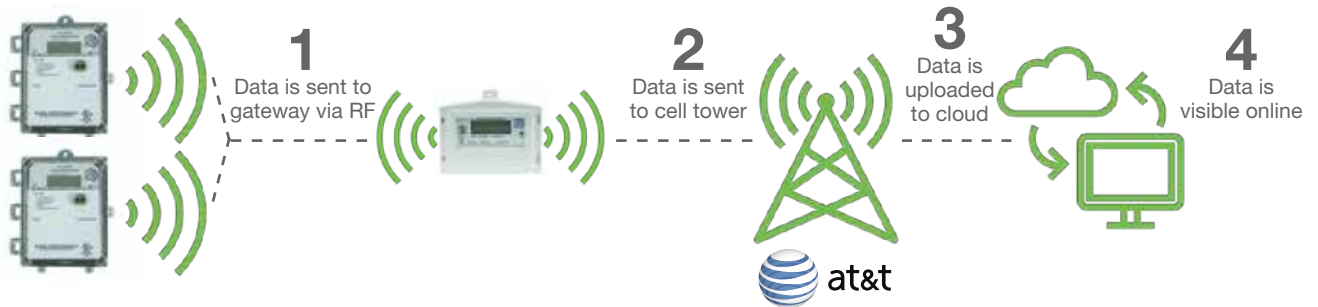
ZERO IT required. Power on the meter and watch the data appear online.



900 MHz RADIO FREQUENCY

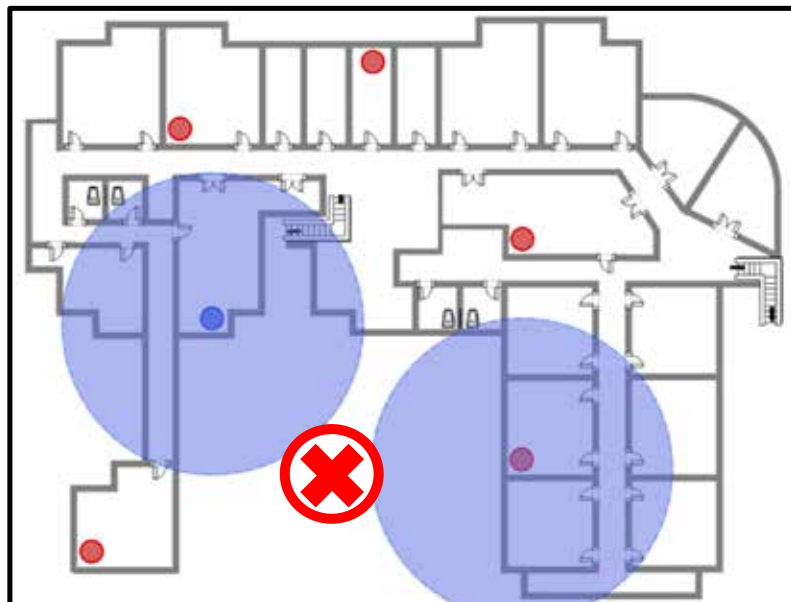
Sites with many NE Meters utilize radio frequency communication to enable the meter to talk to our Smart Gateway. The gateway then communicates to the cloud using one of the following: Wi-Fi, Ethernet or M1. The gateway automatically collects the meters' data and uploads these values to our cloud database. The example below depicts how the setup works when the gateway is equipped with cellular technology.

Additional RF antennas may be necessary to ensure a reliable connection at large sites.



RF METER SETUP

Each NE Meter is equipped with a RF communication card. This technology allows the meters to talk to one another and eventually reach the smart gateway. The RF range of the gateway and one meter is shown below. The range of the selected meter is not far enough to reach the gateway, so it will need the help of the other meters.



LEGEND

- New Era Meter
- Smart Gateway
- Wireless RF Range

ETHERNET

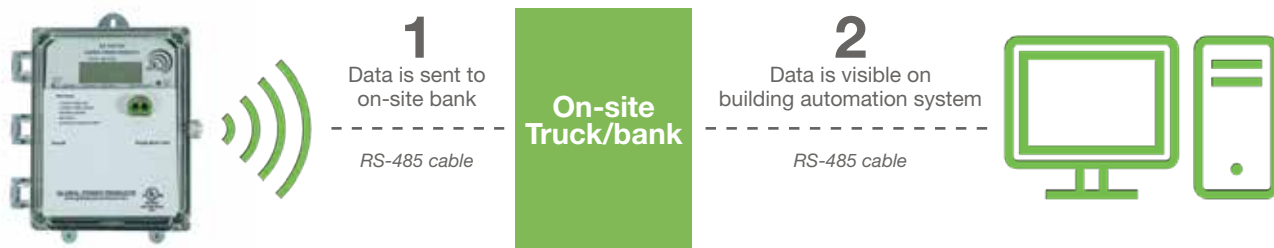
The NE meter connects to an on-site LAN via RJ-45 cable (ethernet patch cable). Once connected to the network, the meter starts uploading its data to our cloud database. The on-site network must allow the meter to connect to the internet.



MODBUS/BACnet SYSTEM

The NE meter connects to the on-site trunk/bank of a building automation system through a RS-485 cable (3-wire output). The meter readings can then be viewed using the building automation system.

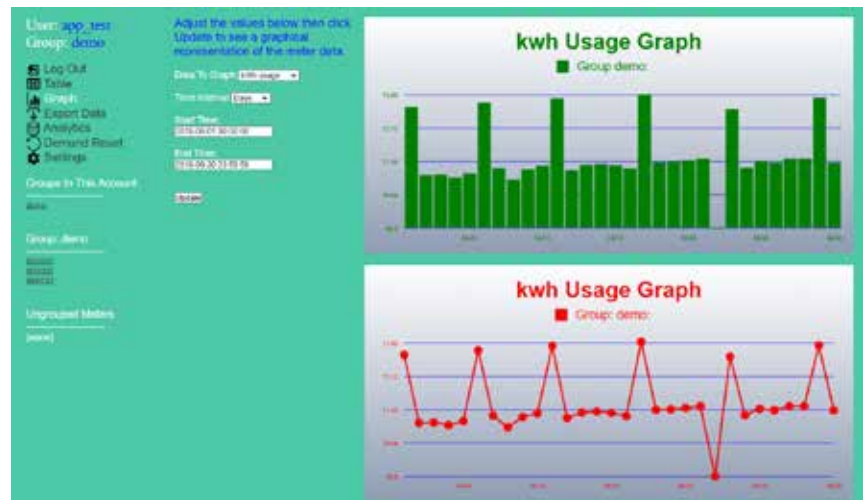
The Modbus protocol that the NE meter currently uses is RTU.
The BACnet protocol the NE meter currently uses is MSTP or IP.



NE METER MANAGEMENT WEBSITE

- Access every meter upload since the meter was installed
- Create graphs illustrating usage in specific time ranges
- Export meter reports to make monthly billing easy
- Perform demand resets
- And more...

VISIT OUR WEBSITE AND LOG IN TO OUR DEMO ACCOUNT:
URL: nemeter.com/login
Username: App_test
Password: 12345



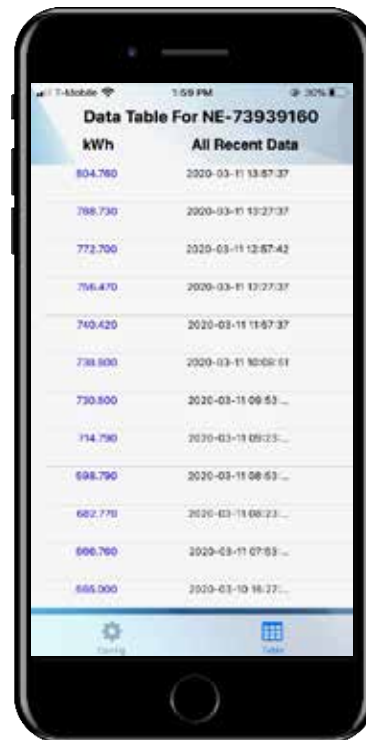
NE METER MANAGEMENT SMART PHONE APP

- View your meter readings from anywhere in the world
- Perform remote demand resets
- And more...

DOWNLOAD THE APP AND LOG IN WITH OUR TEST ACCOUNT:

App Store: NE App
Username: App_test
Password: 12345

ANDRIOD APP COMING SOON!





PRODUCT OFFERINGS



Surface Mount Meter

PRODUCT OVERVIEW

The NE Surface Mount Meter is a smart electric meter that utilizes some of the most advanced true-RMS metering technology available in today's market. With Carbon Footprint Reporting, an auto-ranging power supply, and non-volatile memory, the New Era Surface Mount Meter is ideally suited for any metering or sub-metering application.

Powered by cutting-edge technology to automatically deliver meter readings to the cloud, this smart meter is available in a range of communication options, including LTE Cat M1, Ethernet, Wi-Fi, and 900 MHz Radio Frequency.

SPECIFICATIONS

- Dimensions: 8 in. x 9.75 in. x 3.3. in.
- NEMA 4X enclosure (indoor and outdoor use)
- 100-5000A
- 120V 1PH 2W and 120/208/240V 1PH 3W

FEATURES AND BENEFITS

- Remote reading
- Remote demand reset
- Ability to export data from the cloud
- Real-time analytics

COMPLIANT:

- ANSI C12.20
- UL-listed
- Revenue grade

OPERATING RANGE:

- Voltage: 96-528 volts (absolute)
- Current: 100-5000Amp Transformer
- Frequency: 47Hz to 64Hz
- Temperature: -40C to 85C
- Humidity: 0 to 95% non-condensing
- Acceptable services
- 3 Phase 4 Wire Wye/Delta
- 3 Phase 3 Wire Delta
- 1 Phase 2 Wire or 3 Wire

ACCURACY

	UNITY POWER FACTOR	50% POWER FACTOR
Test Amps/30	0.2%	0.5%

BURDENS

- Current Circuit: Phase A,B,C | 1VA max
- Voltage Circuit: Phase A | 8.6VA max
- Power Circuit: Phase B & C | 0.24VA max

INSULATION, SURGE PROTECTION AND PERFORMANCE

- Conforms ANSI C12.20
- ANSI/IEEE C37.90.1-1989
- IEC 801-4(4kV) 1988
- FCC part 15 and FCC 68

MODELS

	NE-5000	NE-5100	NE-5200	NE-5300
kWh	X	X	X	X
kW		X	X	X
TOU			X	X
kVA or kVAR				X
PF				X



Mini-Meter

PRODUCT OVERVIEW

The NE Mini Meter is a revenue-grade, true-RMS electric meter that offers the same capabilities as our Surface Mount Meter but with a smaller footprint for tight spaces and indoor-only use. With Carbon Footprint Reporting, an auto-ranging power supply, and non-volatile memory, the New Era Mini Meter delivers real-time data with advanced 0.2% accuracy.

Powered by cutting-edge technology to automatically deliver meter readings to the cloud, this smart meter is available in a range of communication options, including LTE Cat M1, Ethernet, Wi-Fi, and 900 MHz Radio Frequency.

SPECIFICATIONS

- Dimensions: 6.5 in. x 5 in. x 2 in.
- Indoor use only
- 100-5000A
- 120V 1PH 2W and 120/208/240V 1PH 3W

FEATURES AND BENEFITS

- Remote reading
- Remote demand reset
- Ability to export data from the cloud
- Real-time analytics

COMPLIANT:

- ANSI C12.20
- Components of Mini Meter Kits are UL/cUL

TECHNICAL INFORMATION

- Available in indoor flush mount or surface mount enclosure
- Select surface mount and flush mount models include built-in wireless AMR capabilities.
- Revenue grade accuracy: 0.5% accuracy class
- Use with split core or solid core CTs
- Up to three sets of CTs per phase can be paralleled per meter if needed

OPERATING RANGE:

- Voltage: 96-528 volts (absolute)
- Current: 100-5000Amp Transformer
- Frequency: 47Hz to 64Hz
- Temperature: -40C to 85C
- Humidity: 0 to 95% non-condensing
- Acceptable services
- 3 Phase 4 Wire Wye/Delta
- 3 Phase 3 Wire Delta
- 1 Phase 2 Wire or 3 Wire

ACCURACY

	UNITY POWER FACTOR	50% POWER FACTOR
Test Amps/30	0.2%	0.5%

BURDENS

- Current Circuit: Phase A,B,C | 1VA max
- Voltage Circuit: Phase A | 8.6VA max
- Power Circuit: Phase B & C | 0.24VA max

INSULATION, SURGE PROTECTION AND PERFORMANCE

- Conforms ANSI C12.20
- ANSI/IEEE C37.90.1-1989
- IEC 801-4(4kV) 1988
- FCC part 15 and FCC 68

MODELS

	NE-5000	NE-5100	NE-5200	NE-5300
kWh	X	X	X	X
kW		X	X	X
TOU			X	X
kVA or kVAR				X
PF				X



Socket Meter

PRODUCT OVERVIEW

The NE Socket Meter is a universal, revenue-grade smart meter that is specifically designed to accommodate multiple meter forms, including 2S, 12S, and 16S. The NE Socket Meter delivers superior 0.2% accuracy and is well-suited for residential and commercial applications, including renovations, apartments or high-rises where the meter based is already wired in.

Powered by cutting-edge technology to automatically deliver meter readings to the cloud, this smart meter is available in a range of communication options, including LTE Cat M1, Ethernet, Wi-Fi, and 900 MHz Radio Frequency.

SPECIFICATIONS

- Multiple meter forms available including 2S, 12S and 16S
- Dimensions: 4.9 in. x 6.95 in.
- NEMA 4X enclosure for indoor and outdoor use
- 100-5000A
- 120V 1PH 2W and 120/208/240V 1PH 3W

FEATURES AND BENEFITS

- Remote reading
- Remote demand reset
- Ability to export data from the cloud
- Real-time analytics

COMPLIANT:

- ANSI C12.20
- UL-listed

TECHNICAL INFORMATION

- Available in NEMA 4X indoor/outdoor individual meter enclosures and Multiple Meter Units (MMUs) from 2 to 19 meters
- Built-in wireless AMR capabilities
- Revenue grade accuracy: 0.5% accuracy class
- Use with split core or solid core CTs

OPERATING RANGE:

- Voltage: 96-528 volts (absolute)
- Current: 100-5000Amp Transformer
- Frequency: 47Hz to 64Hz
- Temperature: -40C to 85C
- Humidity: 0 to 95% non-condensing
- Acceptable services
- 3 Phase 4 Wire Wye/Delta
- 3 Phase 3 Wire Delta
- 1 Phase 2 Wire or 3 Wire

ACCURACY

	UNITY POWER FACTOR	50% POWER FACTOR
Test Amps/30	0.2%	0.5%

BURDENS

- Current Circuit: Phase A,B,C | 1VA max
- Voltage Circuit: Phase A | 8.6VA max
- Power Circuit: Phase B & C | 0.24VA max

INSULATION, SURGE PROTECTION AND PERFORMANCE

- Conforms ANSI C12.20
- ANSI/IEEE C37.90.1-1989
- IEC 801-4(4kV) 1988
- FCC part 15 and FCC 68

MODELS

	NE-5000	NE-5100	NE-5200	NE-5300
kWh	X	X	X	X
kW		X	X	X
TOU			X	X
kVA or kVAR				X
PF				X



Multi-Meter Panels

PRODUCT OVERVIEW

NE Multi Meter Panels utilize revenue-grade 0.2% accuracy to monitor up to 12 circuits within an electrical panel for real-time metering and energy management. Available in 6 and 12 slot configurations, these true-RMS electric meters are designed for multi-tenant residential, commercial, and industrial applications.

Powered by cutting-edge technology to automatically deliver meter readings to the cloud, NE Multi Meter Panels are available in a range of communication options, including LTE Cat M1, Ethernet, Wi-Fi, and 900 MHz Radio Frequency.

SPECIFICATIONS

- 6 Slot Dimensions: 13.34 in. x 11.83 in. x 6.31 in.
- 12 Slot Dimensions: 17.58 in. x 15.96 in. x 8.34 in.
- 100-5000A
- 120V 1PH 2W and 120/208/240V 1PH 3W
- NEMA 4 X enclosure that works both indoors and outdoors.

COMPLIANT:

- ANSI C12.20
- UL-listed

TECHNICAL INFORMATION

- Available in NEMA 4X indoor/outdoor
- Multiple Meter Units (MMUs) from 6 to 12 meters
- Built-in wireless AMR and temperature sensing capabilities
- Revenue grade accuracy: 0.5% accuracy class
- Use with split core or solid core CTs
- Up to three sets of CTs per phase can be paralleled per meter if needed

OPERATING RANGE:

- Voltage: 96-528 volts (absolute)
- Current: 100-5000Amp Transformer
- Frequency: 47Hz to 64Hz
- Temperature: -40C to 85C
- Humidity: 0 to 95% non-condensing
- Acceptable services
- 3 Phase 4 Wire Wye/Delta
- 3 Phase 3 Wire Delta
- 1 Phase 2 Wire or 3 Wire

ACCURACY

	UNITY POWER FACTOR	50% POWER FACTOR
Test Amps/30	0.2%	0.5%

BURDENS

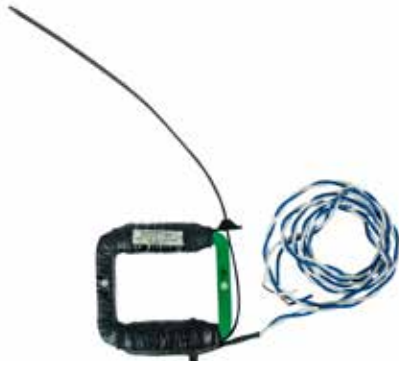
- Current Circuit: Phase A,B,C | 1VA max
- Voltage Circuit: Phase A | 8.6VA max
- Power Circuit: Phase B & C | 0.24VA max

INSULATION, SURGE PROTECTION AND PERFORMANCE

- Conforms ANSI C12.20
- ANSI/IEEE C37.90.1-1989
- IEC 801-4(4kV) 1988
- FCC part 15 and FCC 68

MODELS

	NE-5000	NE-5100	NE-5200	NE-5300
kWh	X	X	X	X
kW		X	X	X
TOU			X	X
kVA or kVAR				X
PF				X



Split Core

Global Power Products current transformers (CTs) are for use with both GPP and conventional transformer-rated meters. They are manufactured without a base for applications where space is limited. The CT leads can be spliced for remote meter location and they are all easy to handle and install.

PRODUCT AVAILABILITY

- All current transformers are designed for indoor use only.
- All current transformers are supplied without a base.
- Call for custom availability options.

Type MX:

- Split-Core
- 100 mA Secondary
- Continuous thermal rating factor of 1.33
- Supplied with 6' leads
- Accuracy of 1% at a burden of 4.68 ohms

PRIMARY CURRENT AVAILABLE (AMPERES)

100	600	1200	2500
200	1200	2500	5000
400	1600	3000	---

TYPE CX:

- Split-Core
- 5 ampere Secondary
- Continuous TRF of 1.0
- Supplied with 6' leads
- 100 amp Primary CT has an accuracy range of 4.8% at a burden of 0.4 ohms.
- 200 and 400 amp Primary CTs have an accuracy range of 4.8% at a burden of 0.1 ohms.
- 800 amp Primary CT has an accuracy range of 4.8% at a burden of 0.2 ohms.

PRIMARY CURRENT AVAILABLE (AMPERES)

100	800	2000	4000
200	1200	2500	5000
400	1600	3000	---

STANDARD FEATURES

- 6', twisted pair, color coded leads
- White dot to indicate polarity
- UL Approved
- 100 mA Secondary for Type MX
- 5 ampere Secondary for Type CX
- Fully encapsulated split-core transformers
- Reusable tie-wrap
- 600V insulation rating
- Parallel up to three sets for combined loads

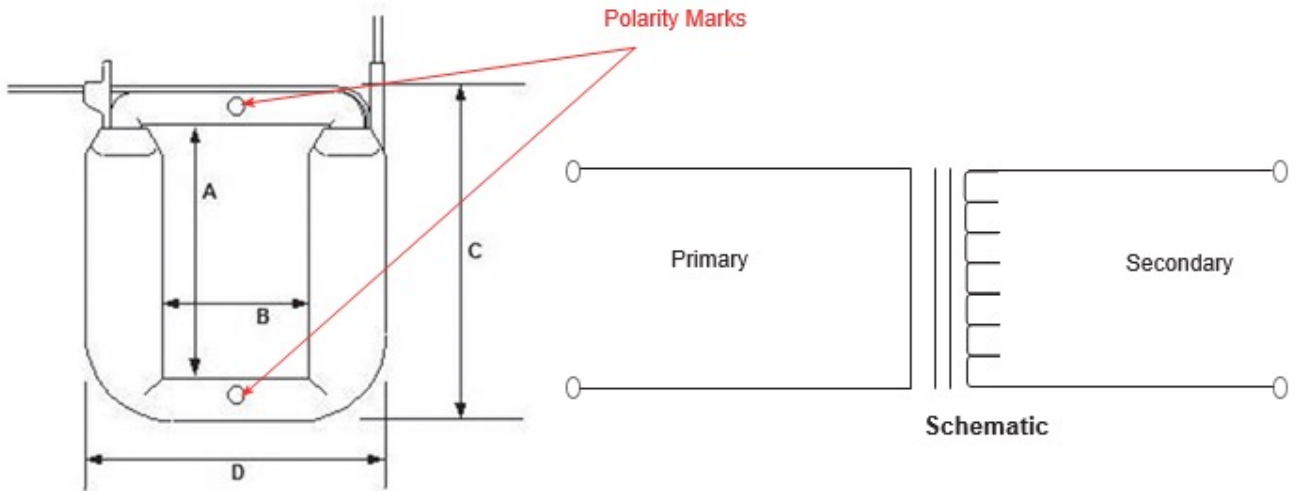
TYPE MX

AMPERES PRI: SEC	NUMBER	INSIDE DIMENSIONS (INCHES)	OUTSIDE DIMENSIONS (INCHES)
100 : 0.1	512274-011	1.00 X 2.25	3.60 X 3.85
200 : 0.1	512274-012	1.00 X 2.24	3.77 x 3.73
400 : 0.1	512274-013	2.25 X 3.50	4.25 x 4.50
600 : 0.1	512274-014	2.25 X 3.50	4.25 x 4.50
800 : 0.1	512274-015	2.25 X 3.50	4.25 x 4.50
1000 : 0.1	512274-016	3.125 X 4.50	5.125 x 5.50
1200 : 0.1	512274-017	3.125 X 6.56	5.125 x 7.50
1600 : 0.1	512274-018	3.125 X 6.50	5.125 x 7.50
2000 : 0.1	512274-019	3.125 X 8.00	5.125 x 9.00
2500 : 0.1	512274-020	3.125 X 8.00	5.125 x 9.00
2500 : 0.1	512274-021	4.25 X 8.00	7.75 x 9.00
3000 : 0.1	512274-022	3.125 X 8.00	5.125 x 9.00
3000 : 0.1	512274-023	4.25 X 8.00	7.75 x 9.00

AWG Size	6	4	2	1	1/0	2/0	3/0	4/0	250	300	350	400	500	600	700	750	1000
DIA. (Inches)	.290	.335	.390	.460	.500	.540	.585	.635	.710	.760	.810	.850	.930	1.035	1.100	1.130	1.280

DIMENSIONS

Type MX and Type CX



(Inside Dimension is A x B; Outside Dimension is D x C)



Lined area for notes



NEW ERA SMART ELECTRIC METERS



Address: 225 Arnold Road, Lawrenceville, GA 30044
Phone: 1 (800) 886-3837
Fax: 1 (888) 886-3837
E-mail: info@globalpowerproducts.com