

# Landscape Lighting

- Suitable for use in wet locations
- Easy installation with most outdoor luminaires
- Compact and attractive regardless of final height
- Fixture Fitting; round pipe is always in alignment with landscape architecture



Landscape LightPost:  
Part Number: LLPN25B

Landscape SplicePost:  
Part Number: LSPB

## Landscape SplicePost

- Includes an integral 19 cubic inch junction box
- Accommodates two (2) 20 AMP circuits.

## Landscape LightPost

- Designed for line voltage and low voltage applications
- Cost-effective, simple solution

# Splice Kits

- For direct burial
- Labor Savings; eliminates expensive crimping tools
- Obsoletes messy, two-part splice kits
- Accommodates virtually all UF Cable wire sizes



UF Cable Splice Kit:  
Part Number: UFC2B

UF Stretcher Kit:  
Part Number: UFS2

Heat Shrink Torch:  
Part Number: HST-T1

# Custom Capabilities

With over 40 years of manufacturing expertise specializing in fixture whips, power whips, distribution cable assemblies, specialty lighting, ground bonding, and wire harness assemblies, we provide complete customization and fabrication services that provide solutions built according to your individual specifications that meet your application requirements.

EPCO can design custom solutions from your specifications, sketches, or drawings and oversee production. Our resources and experience provide you with innovative, solutions combined with quality UL or ETL listed and recognized materials. If you don't see exactly what you need in our catalog, call or email our Inside Sales Department at 800-336-1976 or sales@engproducts.com with your product request today.

# Welcome to Engineered Products Company



Engineered Products Company (EPCO) is a family-owned business located a few miles from downtown Minneapolis, Minnesota. We are a premier supplier of electrical specialty products for residential contractors. Our product line includes a unique blend of time and labor-saving products, which are cost-effective and competitively priced to meet a broad variety of residential applications.

Our standard cataloged products are in stock at our 50,000 square foot warehouse and available for immediate shipment. We work directly with your electrical distributor to provide you with reliable and durable high-quality products. EPCO'S extraordinary customer service includes pre-purchase technical support, fast and easy ordering, and we will ship your order 100% complete in 24 hours or less. As an industry leader we also provide comprehensive after sales technical support, and "hassle-free" returns.

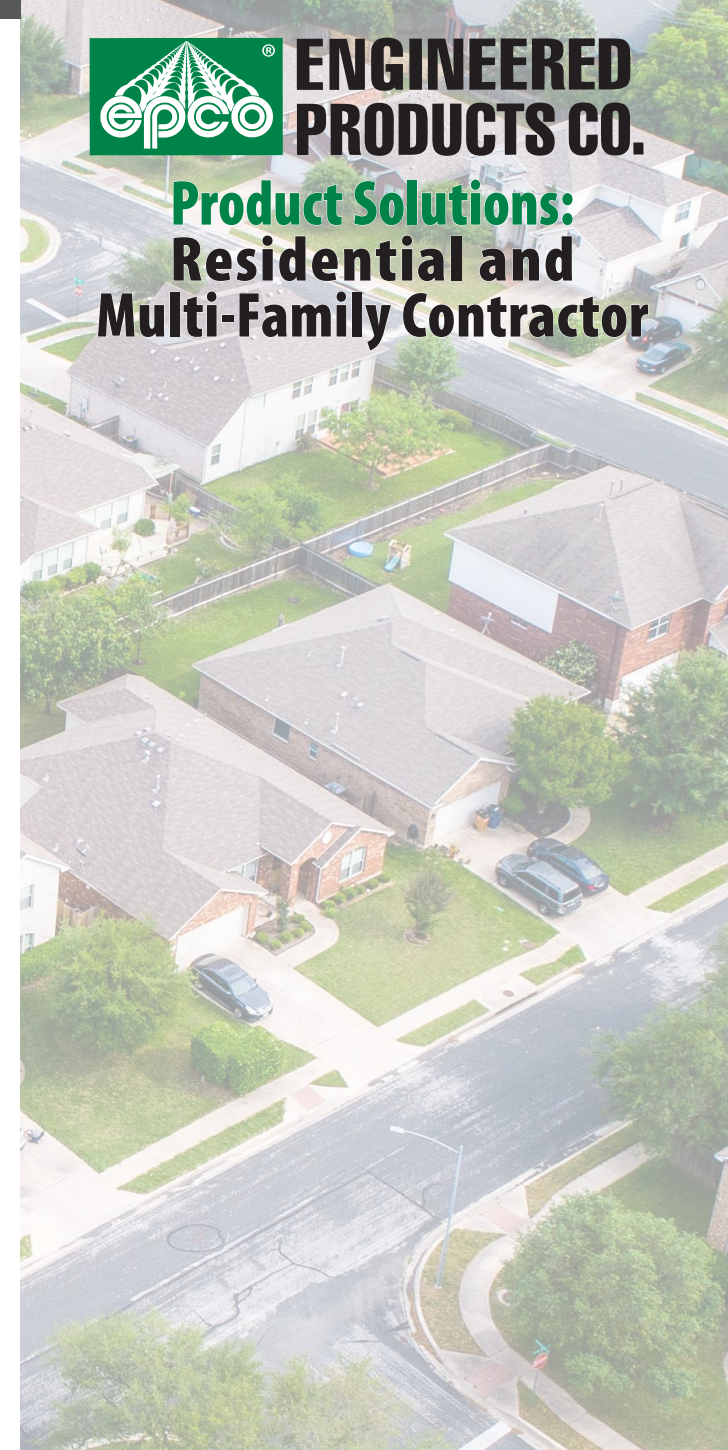
If you don't see exactly what you need, please contact your local EPCO Sales Representative or EPCO Inside Sales (800.336.1976 or sales@engproducts.com), or visit our website at engproducts.com. Our team will work with you to configure the best product solution to meet your application need.



The Lee family, from left: Nick Lee (EPCO National Sales Manager), Pete Lee (EPCO Founder), and Duncan Lee (EPCO CEO).



## Product Solutions: Residential and Multi-Family Contractor



© 2022 Engineered Products Company. All Rights Reserved. PigTails, PowerTails, QuikWhips, Landscape LightPost and SplicePost, TIGER, TIGRESS, and CordLights are either trademarks or registered trademarks of Engineered Products Company in the United States and/or in other countries. All other trademarks are the property of their respective holders.

www.engproducts.com  
5401 SMETANA DRIVE | MINNETONKA, MN 55343  
P 800.336.1976 | F 800.336.2801



engproducts.com

# Air Conditioner Whips

- Designed to save installation time and labor
- 1/2" or 3/4" Non-Metallic Liquid Tight Conduit
- Connects the Central AC Compressor to the power disconnect box
- Includes the following:
  - One (1) Straight and one(1) 90° connector
  - Three (3) conductors using either 8 or 10 AWG THHN Conductors



Other configurations are available. Please contact us if you need a custom solution.

# Luminaire and Power Equipment Whips

- Standard Luminaire and Illumination Control Fixture Whips
- Flexible Metal or Liquid-Tight Conduit; 3/8" or 1/2" Conduit Sizes
- 120/277 VAC, available in 12, 14, 16, and 18 AWG
- Stranded or Solid THHN Conductors
- Illumination Control Fixture Whip combines power and lighting circuits when using Class 2 or Class 3 control circuits
- Hospital/Patient Health Care Applications — 12 AWG only
- "Custom" fixture whips can be ordered to your specifications



Other configurations are available. Please contact us if you need a custom solution.

# Lamp Holders

## Porcelain and Plastic Lamp Holders

- UV resistant; will not fade or discolor
- Pre-attached 7-inch black and white leads save installation time and labor
- Efficient and reliable connection to incoming power
- Fits 3.25" or 4.0" outlet box



Part Number: 16520



Part Number: 16524

# Power/Appliance Cords

## Power/Appliance Cords

- For installation of garbage disposals, dishwashers, or similar appliances
- Can be used for repairs of appliances, power tools, or other electrical equipment
- 3-wire heavy-duty conductors



## Range and Dryer Cords

- Heavy-duty terminals
- Right angle plug
- Includes strain relief



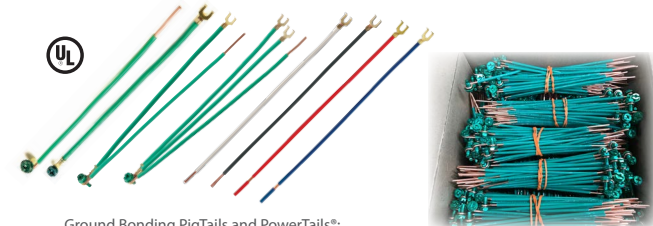
# Small Space Luminaires

- Part Numbers 16550 (no switch) and 16545 (includes switch) automatically illuminate when occupancy is detected; turns off after three (3) minutes
- Eliminates batteries and saves money
- Part Numbers 16531 (Keyless) and 16536 (Pull Chain) include:
  - A 9-watt Bi-Pin LED Lamp and Polycarbonate Lamp Diffuser
  - Lamp Color/Output: 2700K, 800 Lumens, Efficacy 88 LM/W
- For "new" or "retrofit" installations; ceiling or wall mount locations
- Prescriptive rebates for all Small Space Luminaires may be available



# Ground Bonding PigTails™

- Ground bonding in a power distribution box, junction box, or multi-gang receptacle box
- Recommended for use in metal box applications
- Includes a ground screw or fork terminal on one end, the other end is pre-stripped 1"
- Available in 6.5", 8", 10", and 12" lengths



Ground Bonding PigTails and PowerTails®:  
Part Numbers: 20009, 20004, 20067,  
20074, 20061, 20062, 20065, 20077

Bulk PigTails Available!

Other configurations are available. Please contact us if you need a custom solution.

# Temporary Lighting

## TIGER™ Temporary LED Luminaires

- Available in 60-, 100-, and 150-Watt LED Luminaires

## TIGRESS™ Multi-Lamp Temporary Light Fixture

- Multi-Input Voltage Range: 120-277 VAC @ 60 Hz
  - Four (4) 1/2" trade size knockouts
  - Available with or without LED Corn Cob Lamp and power cord
- ## LED CordLights™ and Deluxe CordLights™
- LED CordLights available in 100-FT (10,000 and 20,000 Lumens) or 50-FT (5,000 Lumens) and use heavy-duty 18/2 SJTW round cord
  - Deluxe CordLights for use with A21 LED Lamp or A23 Incandescent Lamp and use heavy-duty 14/2 or 12/3 SJTW round cord

